

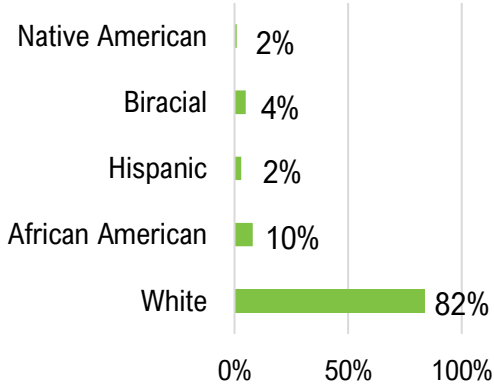
60%
MALE

40%
FEMALE



Average age of
38 Years Old

RACE / ETHNICITY



81%
CRIMINAL BACKGROUND

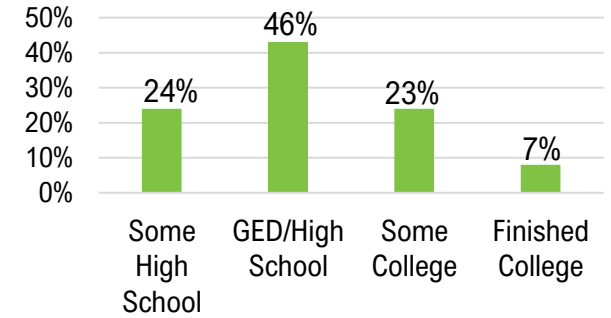


59%
LACK TRANSPORTATION

4%
LACK STABLE HOUSING

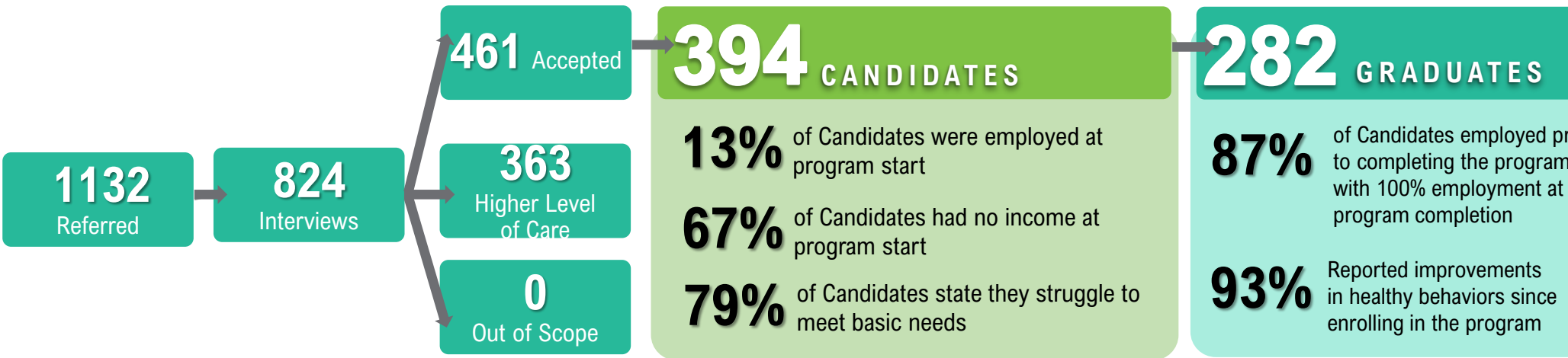


HIGHEST LEVEL OF EDUCATION



76%
STRUGGLE WITH MENTAL HEALTH

80%
SUBSTANCE USE DISORDER



394 CANDIDATES

- 13%** of Candidates were employed at program start
- 67%** of Candidates had no income at program start
- 79%** of Candidates state they struggle to meet basic needs

282 GRADUATES

- 87%** of Candidates employed prior to completing the program, with 100% employment at program completion
- 93%** Reported improvements in healthy behaviors since enrolling in the program

\$8.5
Million dollars have been put back into the economy.

In addition, Life Learning Center's 2024 recidivism rate was 4.45% which is a stark contrast against the national average of 83%.

37,178 CARE OFFERINGS DEPLOYED